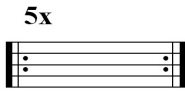


INDICACIONES / INDICATIONS



Repetir el número de veces indicado / Repeat (those many) times



Hablado, tono de voz normal / Spoken, normal tone of voice



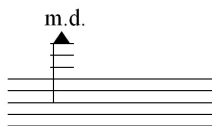
Dejar sonar / Let sound continue (also *l.v.*)

l.v.sempre.....

Dejar sonar todo / Let every sound continue (also *l.v.*)

m.d.

Mano derecha / Right hand



Nota sobreaguda: *i* en 1ª cuerda sobre la boca, el *a* toca la

misma cuerda / Very high note, *i* presses in 1st string near the rose, *a* plays the same string



Secuencia ascendente de cuartos de tono

Ascending quarter-tone sequence

Duración 5'40" ca

ESTO NO ES UNA PIEZA

EDUARDO FERNÁNDEZ

Muy preciso, sin rubato ♩ = 108

5x
mf *sempre uguale*
senza espressione
p
Es-to no es u-na pie-za

6
pp
cresc. *l.v. sempre*
3x *5x* *4x* *4x*

12
mf *e cresc. sempre* *ff*
3x *6* *6* *5x* *(l.v. sempre)*

18
mf *Es - to* *no* *es* *fff* *e diminuendo.....*
senza espressione *(l.v. sempre)*
2 *8x* *5x*

24
mf *(sempre diminuendo)*
2x *4x* *6* *6* *5x* *3x*

29 2x

ppp

Meno, appena.

♩ = 80

35 senza espressione

mf Es - to

mf l.v. sempre

39 breve

p

40

f

sempre f

l.v. sempre

42

sempre f

45 *sempre uguale*
p es *mf*

50 *subito f*

55 *p* *ppp* *f*

59 *ff* *molto accentuato*

63

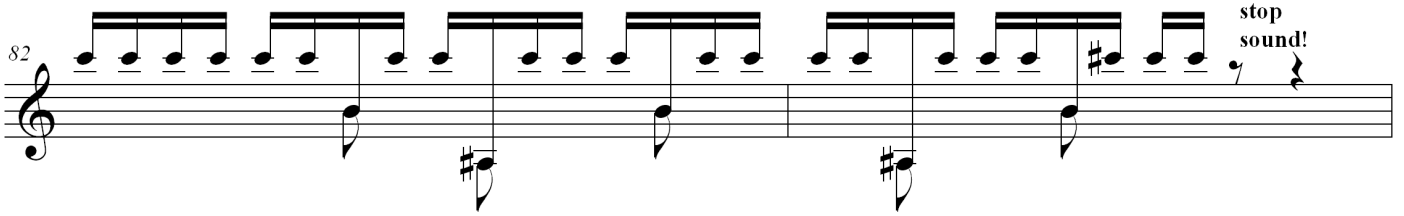
66 *fff* *stop sound!* *p* Es to no
l.v. sempre

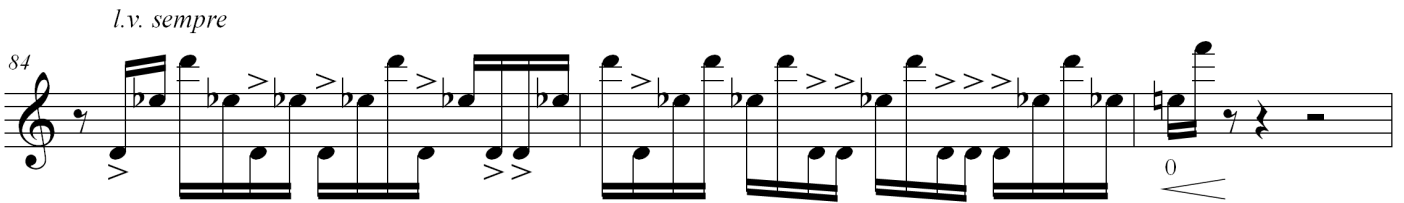
69 *mf* *non arpeggiato!* *l.v. sempre la 6a. corda!*

73 *stop sound!* **Più mosso** ♩ = 96 *f* *il basso sempre sfz e l.v.*

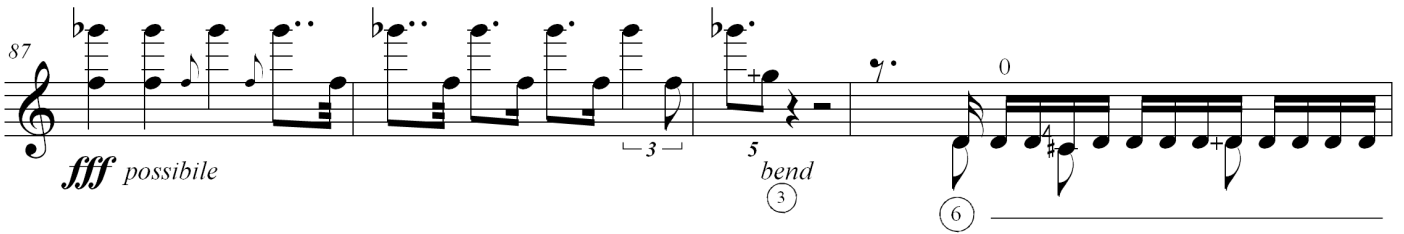
76 *stop sound!* *più f*

78 *stop sound!* *ancora più f*

82  stop sound!

l.v. sempre
84 

ancora più ff

87  *fff* possibile 3 5 bend 3 6

91  stop sound!

2-3/VII/1994